



HAWAIIANA

Hawaiiana Management Company, Ltd.
Pacific Park Plaza, Suite 700
711 Kapiolani Boulevard
Honolulu, Hawaii 96813
Tel: (808) 593-6378
Fax: (808) 447-5163
Internet: www.hmcmtg.com

September 2021

Dear The Collection Owner,

Your Board of Directors has approved the 2022 Operating and Reserve Budgets which were prepared on a cash basis and after carefully reviewing the Association's current and long range requirements, the Board has increased maintenance fees for 2022 as follows:

Common.....	3.5% increase
Tower.....	0% increase
Midrise (Lofts).....	6% increase
Commercial.....	0% increase

Each unit is charged the *Common* maintenance fee, in addition to the fee associated with the entity in which they reside (*i.e. – Tower, Midrise (Lofts), or Commercial*). Copies of the 2022 Operating and Reserve budgets are available on your website at www.thecollectionhonolulu.net or you may request a hard copy from The Collection office by calling 808-777-3623.

SurePay and other E-Payments

Statements will continue to be sent to you each month. Please return the bottom portion of the statement with your payment (*Unless you are on our automatic SurePay Plan – in your case, your statement is for information only – no need to do anything*). You may sign up to receive your statement via email. Or, if you are not already using our SurePay system for automatic payments, you might want to consider it now. A form for that purpose is enclosed. If a bank or bill payment agency other than Hawaiiana's Surepay Plan pays your maintenance fees, you must inform that agency of the new maintenance fee amount that will be effective with the January 1, 2022 payment.

Please note the following:

- Payments are due on the 1st of each month. A late fee equal to the greater of 5% of the amount due plus 1% interest will be assessed for any unpaid assessments.
- Each unit owner is responsible to maintain his/her unit in good repair. Please check and correct any deficiencies to avoid headaches and additional expenses.
- Insurance - The Association maintains insurance to cover the cost of damage caused by the common elements to the building and to your unit. You are required to have homeowner's insurance (*HO-6*) to cover damages or injuries caused by the failure of fixtures and appliances in your unit or by the actions of its residents and guests.
- Annual Meeting (**September 21, 2021**): You should have already received your proxy form. Even if you plan to attend, please be sure to complete and return it immediately. Doing so will avoid additional costs in sending you the forms again and help the Association save money. If the legal name of the owner of your unit has changed please notify Hawaiiana Management Company Ltd., in writing. This important information must be kept current especially when we prepare and tally proxies and ballots.

Have a safe and happy holiday season!

Sincerely,
FOR THE BOARD OF DIRECTORS
OF THE COLLECTION

Debi Balmilero CMCA[®], AMS[®], PCAM[®]
Management Executive

Enclosures: Maintenance Fee Schedule, Surepay Form, eStatement Flyer

cc: General Manager

THE COLLECTION

2022 Maintenance Fees

Unit Type	2020 Total Fees (excluding electricity)	2021 Total Fees (excluding electricity)	2022 Common Maintenance Fee	2022 Tower Maintenance Fee	2022 Midrise Maintenance Fee	2022 Commercial Maintenance Fee	2022 Total Fees (excluding electricity)
A	1,021.27	1,060.28	144.16	921.00			\$ 1,065.16
A1	1,194.19	1,239.80	168.56	1,076.94			\$ 1,245.50
B	521.44	541.36	73.60	470.25			\$ 543.85
C	818.64	849.91	115.55	738.26			\$ 853.81
D	833.94	865.80	117.72	752.07			\$ 869.79
E	863.67	896.66	121.91	778.87			\$ 900.78
F	1,096.02	1,137.89	154.71	988.41			\$ 1,143.12
G	783.51	813.45	110.60	706.59			\$ 817.19
H	791.62	821.86	111.74	713.90			\$ 825.64
J	522.34	542.30	73.73	471.06			\$ 544.79
K	933.01	968.65	131.70	841.41			\$ 973.11
L	593.49	616.16	83.77	535.22			\$ 618.99
M	878.07	911.61	123.94	791.86			\$ 915.80
N	630.42	654.50	88.99	568.52			\$ 657.51
M-A	470.45	476.35	59.16		444.34		\$ 503.50
M-AR	470.45	476.35	59.16		444.34		\$ 503.50
M-B	796.13	806.24	100.95		751.17		\$ 852.12
M-C	799.03	809.12	101.23		753.98		\$ 855.21
CM 1	2,108.60	2,142.20	337.19			1,816.41	\$ 2,153.60
CM 2	775.16	787.52	124.05			667.66	\$ 791.71
CM 3	42.06	42.74	6.74			36.22	\$ 42.96
CM M1	2,572.62	2,613.69	412.13			2,215.50	\$ 2,627.63

SurePay

Authorization Form

I authorize Hawaiiana Management Company, Ltd., as Agent for my association, to begin deductions from my account with the financial institution named below for payment of my association charges.

I also agree to payment of any handling fee charged for SurePay payment that cannot be processed due to insufficient funds, stop payment or account closure.

If I wish to terminate my SurePay payment, I understand that I must send a letter of notification to Hawaiiana Management Company, Ltd., and that notification must be received by Hawaiiana on or before the 15th of a month to terminate service for the following month; otherwise termination will take place beginning with the following payment.

If Hawaiiana Management Company, Ltd. wishes to terminate SurePay service, the company will send a letter of notification to me. This letter will be mailed 20 days prior to the next SurePay payment for the termination to be effective.

Date: _____

Association: _____

Unit Number: _____

Phone #: _____

E-mail Address: _____

Hawaiiana Account Number: _____

My Financial Institution: _____

9-Digit Routing Number: _____

My Account Number: _____

Account Holders Name (please print) _____

Type of Account: Checking Savings

Authorized Signature

Please attach a voided check from your financial institution for verification. If the form is received by the 15th, SurePay will go into effect on or around the 10th of the following month*.

SurePay

Maintenance Fee Deduction

(Please keep this section for your records)

On _____, I authorized Hawaiiana Management Company, Ltd., to initiate electronic funds transfer from my financial institution account on or about the 10th of each month* to pay my association charges for my unit.

Association Name: _____

Unit Number: _____

Financial Institution: _____

Type of Account: Checking Savings

Account Number: _____

If you wish to terminate SurePay payment, send a letter of notification to:

Hawaiiana Management Company, Ltd.
Attention: SurePay
711 Kapiolani Boulevard, Suite 700
Honolulu, Hawaii 96813

Your letter must be received on or before the 15th of a month to terminate service for the following month, and include your phone number and original signature for the termination to be effective.

If Hawaiiana Management Company, Ltd. wishes to terminate SurePay service, we will mail a letter of notification to you 20 days in advance of the next SurePay payment.

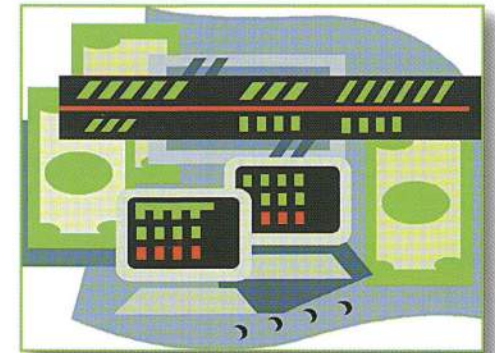
If you have any questions regarding your bank statement, please call your financial institution. If you have any questions about SurePay, please call our Accounting Specialists at (808) 440-5530, or email paymentinquiry@hmcmtg.com.

Please keep Hawaiiana apprised, in writing, of any change of address or account information. Be sure to include your phone number, account number and original signature on all correspondence.

**NOTE: If the 10th falls on a Saturday, your payment will be deducted on the 9th. If the 10th falls on a Sunday or holiday, your payment will be deducted on the next business day.*

SurePay

Automatic Payment Service for your Association Charges



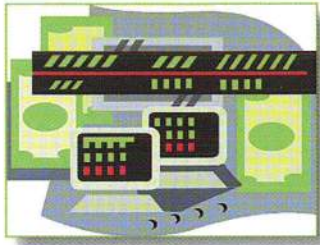
SurePay Advantages:

- No checks to write!
- No postage to pay!
- No chance of late fees!



Hawaiiana Management Company, Ltd.
711 Kapiolani Boulevard, Suite 700
Honolulu, Hawaii 96813
www.hmcmtg.com

- Tired of remembering to send your association fees?
- Want to save postage and avoid late charges?



Discover the convenience of Automatic Payment of Association Fees

SurePay is an automatic payment program offered by Hawaiiana Management Company. It offers an easy approach to paying association charges through any participating local or mainland bank, credit union or savings & loan.

SurePay is easy, and almost every financial institution in the United States participates. Simply authorize Hawaiiana Management Company, Ltd., to directly debit your savings or checking account on or about the tenth of every month*, and you'll never worry again about mailing your check on time.

Hawaiiana's SurePay is an automatic payment system that has been in use for many years. It's easy, reliable, and has been proven by many users including banks, utility companies and Hawaiiana itself.

If you decide later that you would prefer to pay your association charges directly, you can stop automatic payments by simply sending a letter to Hawaiiana stating your desire to terminate the service. (Please be sure to include your phone number in any correspondence for confirmation purposes.) The letter must be received on or before the 15th of a month to terminate service for the following month.

For SurePay convenience, simply complete the adjacent form, detach and return it today! Retain the informational portion for your files.

**PLEASE NOTE: If the 10th falls on a Saturday, your payment will be deducted on the 9th of the month. If the 10th falls on a Sunday or holiday, your payment will be deducted on the next business day.*

(Please keep this part for your records)

SurePay

Instructions

This brochure has two parts. One part is the Authorization Form and the second part is an informational section, which you should keep for your records.

First: Complete the Authorization Form and cut it off along the dotted line.

Second: Please make sure that you have written your account number correctly on the form. If you are using your checking account, please attach a voided check with your form.

Third: Mail the completed form and voided check to the following address:

Hawaiiana Management Company, Ltd.
Attention: SurePay
711 Kapiolani Boulevard, Suite 700
Honolulu, Hawaii 96813

Fourth: Be sure to keep Hawaiiana apprised of any changes to your mailing address.

Please review your bank statement for your first SurePay payment. If we receive your completed form by the 15th of a month, SurePay will be effective the following month.

If you have any questions, please call our Accounting Specialists at (808) 440-5530, or email paymentinquiry@hmcmtg.com.



Hawaiiana Management Company now offers eStatements!

Go Green with our new paperless statement service, known as eStatements! eStatements allow everyone to quickly and securely view your Association's monthly billing statements online. Sign up for eStatements and begin receiving your statements online. With your free eStatements, you'll never have to worry about misplacing your statement again.

With eStatements, you have:

- An electronic version of your paper statement – go green!
- Instant and secure access, 24 hours a day
- Statements archived for quick history reference for up to 12 months
- Email notification when your eStatement is available online
- Printing options – print your statement multiple times or not at all

It's easy to sign up:

Signing up for eStatements is easy and free. Just follow the following easy steps:

1. Go to our website at www.hmcmgt.com
2. Click on the "Find a Community" located on the main menu
3. Enter your Association's name and click on Search then click on the Access eStatements link which will take you to the enrollment screen
4. You will need your eStatement ID and Total Amount Due from your last statement
5. Follow the simple instructions to enroll in this service

**If you require assistance or have any questions, contact
estatementinquiry@hmcmgt.com**

Switch to receiving your eStatements today!